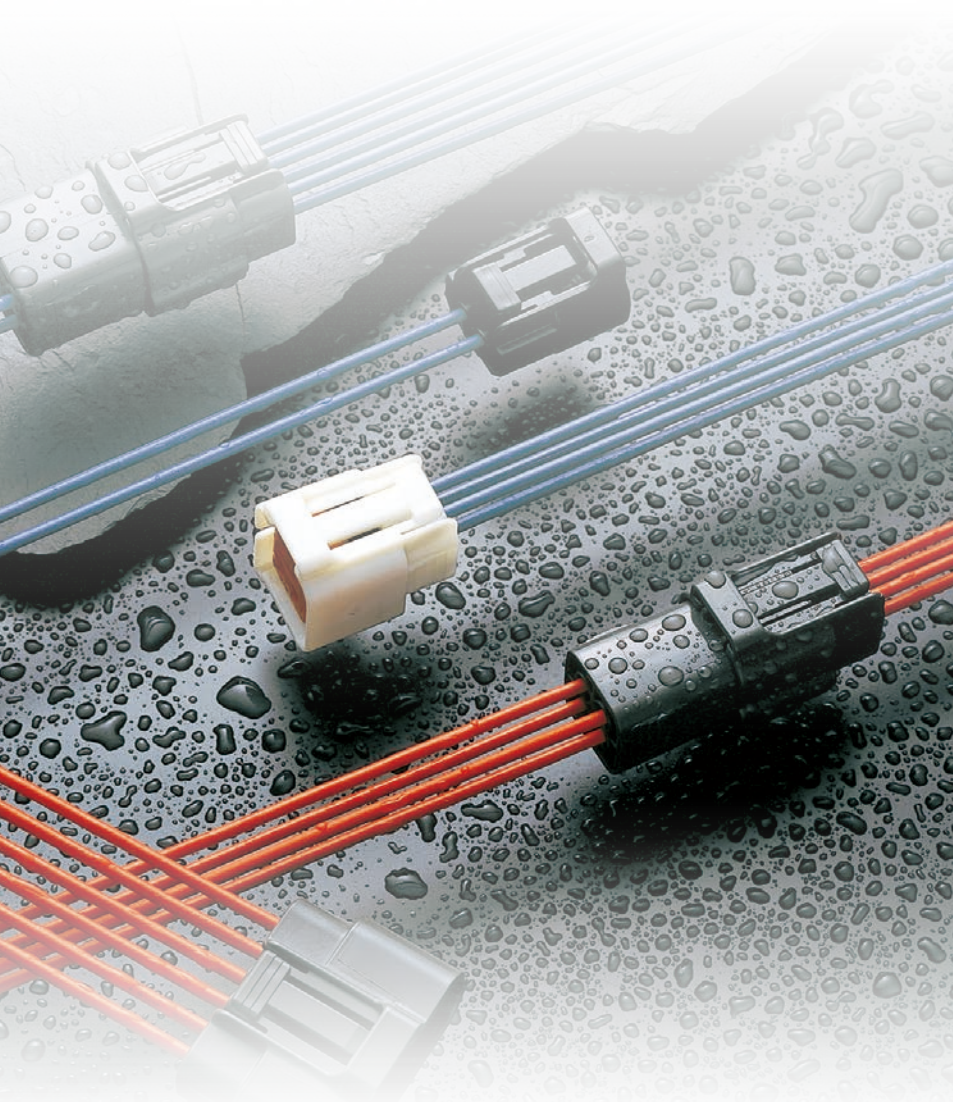


DL SEALED SERIES



Features

The DL sealed connector series has a mechanism that detects when terminals are not inserted completely.

The connector mechanism only allows the retainer to be set when the terminal is completely inserted.

These connectors can be directly secured to a bracket on the car body. In addition, an extra clip can be attached to the connector to secure it to the car body.

特長

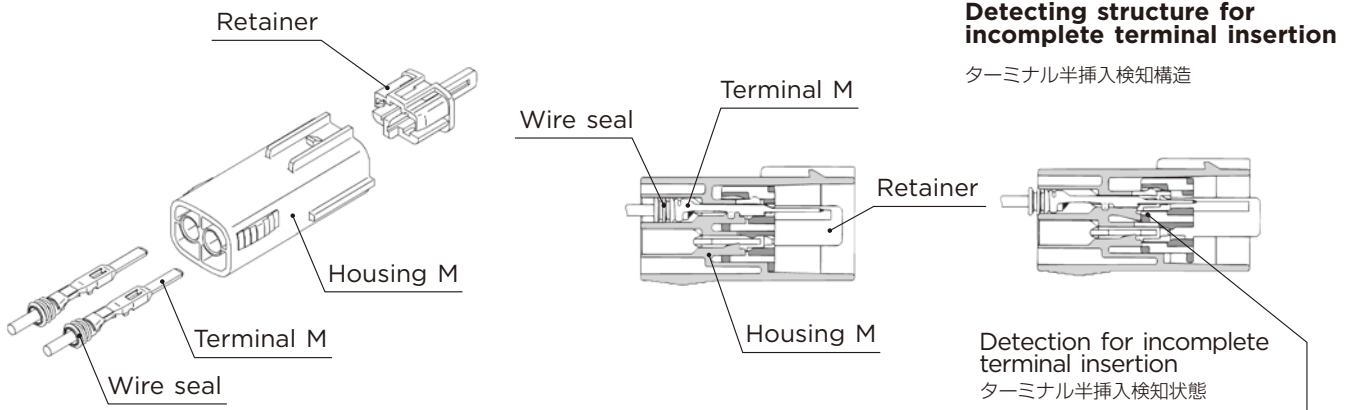
DL 防水シリーズは、挿入不足のターミナルを検知する機構を備えたコネクタシリーズです。ターミナルが半挿入の状態では、リテーナが装着できない機構になっています。

コネクタは、ボデー側のブラケットに直接固定することができます。またコネクタにはボデーに固定するためのクリップを装着することができます。

DL SEALED SERIES for STANDARD

2.3mm (090)

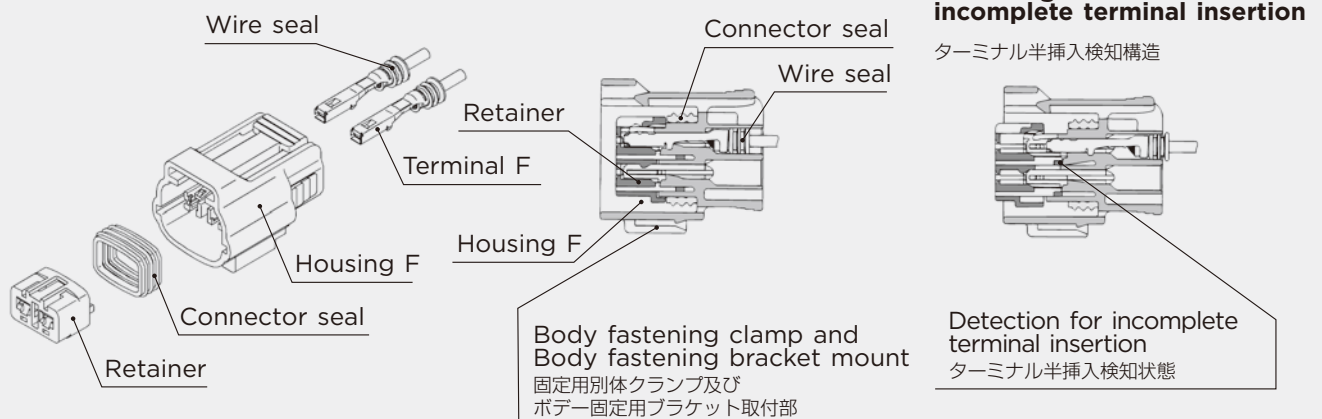
Structure



L-02

Connector M

Connector F



2.3mm (090)

(E)	(J)
Cable size	: 適用電線サイズ
Cable overall diameter	: 電線仕上り外径
Heat-resistant copper alloy	: 耐熱銅合金
Brass	: 黄銅
Surface treatment	: 表面処理
Gold-plated	: Auメッキ
Tin-plated	: Snメッキ

Terminal (UNIT: mm)

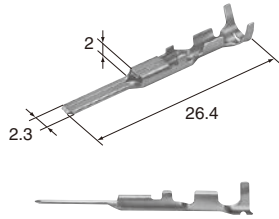
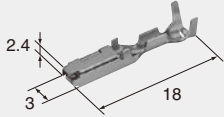
※ For terminal selection, please contact our sales staff.

※ターミナル選定にあたっては、必ず弊社営業担当にお問い合わせください。

(S)Cable size(mm²) 0.3~0.5

Material Brass

Surface treatment Tin-plated

**M(8230-4472)****F(8100-1427)**Cable size(mm²) 0.3~0.5

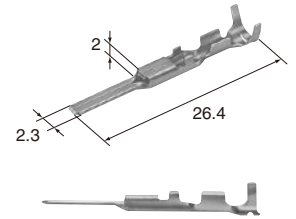
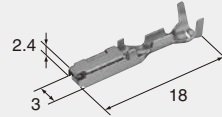
Material Heat-resistant copper alloy

Surface treatment Tin-plated

(S)**Au**Cable size(mm²) 0.3~0.5

Material Brass

Surface treatment Gold-plated

**M(1500-0159)****F(8100-1458)**Cable size(mm²) 0.3~0.5

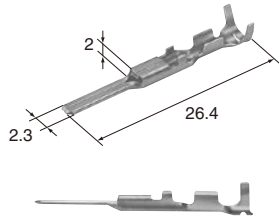
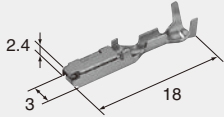
Material Heat-resistant copper alloy

Surface treatment Gold-plated

(M)Cable size(mm²) 0.75~0.85

Material Brass

Surface treatment Tin-plated

**M(8230-4562)****F(8100-1429)**Cable size(mm²) 0.75~0.85

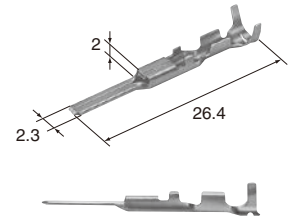
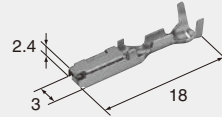
Material Heat-resistant copper alloy

Surface treatment Tin-plated

(M)**Au**Cable size(mm²) 0.75~0.85

Material Brass

Surface treatment Gold-plated

**M(1500-0169)****F(8100-1460)**Cable size(mm²) 0.75~0.85

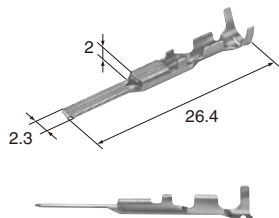
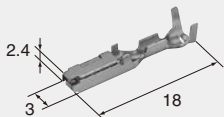
Material Heat-resistant copper alloy

Surface treatment Gold-plated

(L)Cable size(mm²) 1.25~2.0

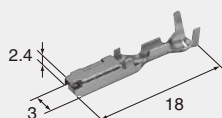
Material Brass

Surface treatment Tin-plated

**M(8230-4552)****F(8100-1428)**Cable size(mm²) 1.25~2.0

Material Heat-resistant copper alloy

Surface treatment Tin-plated

(L)**Au****F(8100-1459)**Cable size(mm²) 1.25~2.0

Material Heat-resistant copper alloy

Surface treatment Gold-plated

L-03

DL SEALED SERIES

2.3mm (090)

Wire seals (UNIT : mm)

- The wire seals are common to M and F.
- ワイヤシールはM、F共用です。

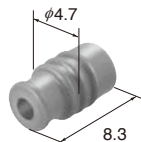
(M)

(7165-0515)

Cable overall diameter(mm) Over than 1.6 mm below 2.4 mm

Material Silicone

Color Gray



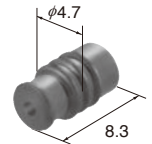
(S)

(7165-0516)

Cable overall diameter(mm) Over than 1.4 mm below 1.6 mm

Material Silicone

Color Black



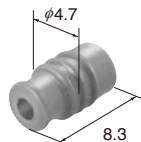
(M)

(7165-0515)

Cable overall diameter(mm) Over than 1.6 mm below 2.4 mm

Material Silicone

Color Gray



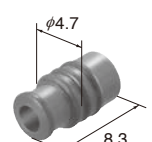
(L)

(7165-0514)

Cable overall diameter(mm) Over than 2.4 mm below 2.7 mm

Material Silicone

Color Dark Green



Note) Below wire seals can be used connectors with insertion cavity specified.

For details, please contact our sales staff.

注) 以下ワイヤーシールの使用できるコネクタは限定されます。
必ず弊社営業担当にお問い合わせください。

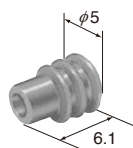
(SS)

(7165-0210)

Cable overall diameter(mm) Over than 1.1 mm below 1.5 mm

Material NBR

Color Red



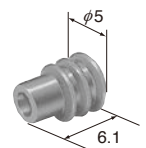
(S)

(7165-0118)

Cable overall diameter(mm) Over than 1.5 mm below 2.0 mm

Material NBR

Color Blue



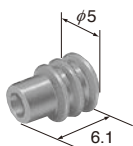
(M)

(7165-0119)

Cable overall diameter(mm) Over than 2.0 mm below 2.9 mm

Material NBR

Color Brown



2.3mm (090)

Dummy plugs (UNIT : mm)

Ref; 2.3mm Dummy plug detail

(7161-9787) B-17

(7165-0193) J-07

- Dummy plugs are common to M and F.
- Dummy plugs are used to blind unused terminal holes.

- ダミー栓はM、F共用です。
- 不必要なターミナル穴を塞ぐために、ダミー栓を使用します。

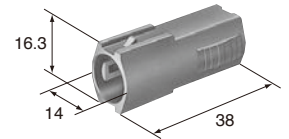
2.3mm (090)

Housing (UNIT : mm)

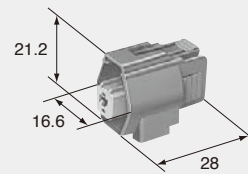
Ref: Terminal part No.	L-02
Ref: wire seal No.	L-04
Ref: Dummy plug No.	B-17 J-07
Material	PBT/PA6T

1way

Material	PBT
Color	Dark Gray



M (6195-0240)

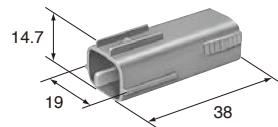


F (6195-0066)

Material	PBT
Color	Dark Gray
Note	L-07 Bracket Clamp : TYPE2

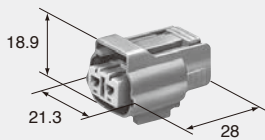
2way

Material	PA6T
Color	Dark Gray



M (6195-0006)

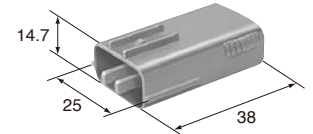
F (6195-0003)



Material	PA6T
Color	Dark Gray
Note	L-07 Bracket Clamp : TYPE2

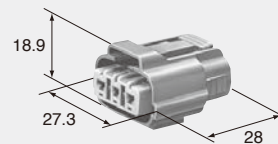
3way

Material	PA6T
Color	Dark Gray



M (6195-0012)

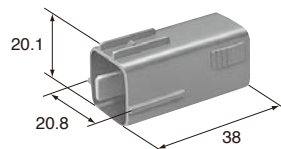
F (6195-0009)



Material	PA6T
Color	Dark Gray
Note	L-07 Bracket Clamp : TYPE2

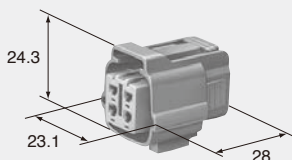
4way

Material	PA6T
Color	Dark Gray



M (6195-0018)

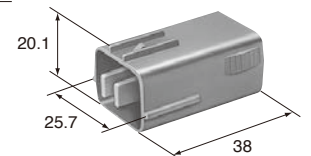
F (6195-0015)



Material	PA6T
Color	Dark Gray
Note	L-07 Bracket Clamp : TYPE2

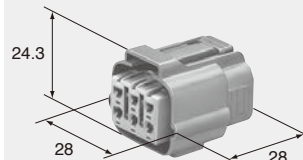
6way

Material	PA6T
Color	Dark Gray



M (6195-0024)

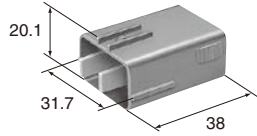
F (6195-0021)



Material	PA6T
Color	Dark Gray
Note	L-07 Bracket Clamp : TYPE2

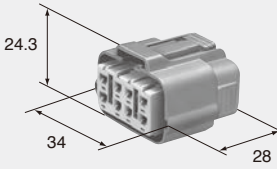
8way

Material	PA6T
Color	Dark Gray



M (6195-0054)

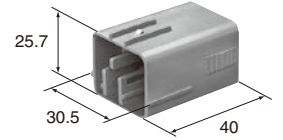
F (6195-0051)



Material	PA6T
Color	Dark Gray
Note	L-07 Bracket Clamp : TYPE2

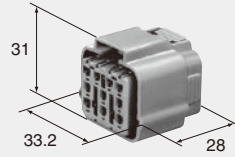
10way

Material	PBT
Color	Light Gray



M (6195-0167)

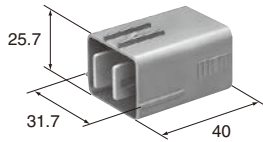
F (6195-0164)



Material	PBT
Color	Light Gray
Note	L-07 Bracket Clamp : TYPE2

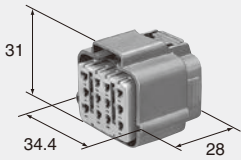
12way

Material	PBT
Color	Dark Gray



M (6195-0152)

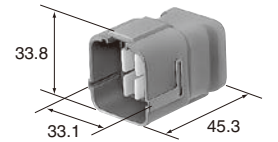
F (6195-0149)



Material	PBT
Color	Dark Gray
Note	L-07 Bracket Clamp : TYPE2

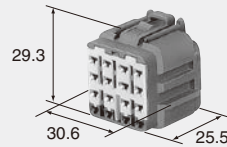
16way

Material	PBT
Color	Dark Gray
Note	L-07 Bracket Clamp : TYPE1



M (6188-0495)

F (6189-0715)



Material	PBT
Color	Dark Gray

L-06

DL SEALED SERIES CONNECTOR ACCESSORIES

Mounting clip (mm)

Mounting clip can be installed on the standard type connectors.
 ※ The detail dimensions for the mounting portion are specified on the drawing.

2.3mm 標準のコネクタには、ボデー固定用クランプを必要に応じて取付けることができます。
 ※取付部詳細寸法は、別途図面により規定します。



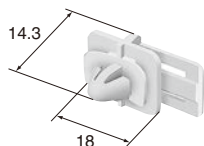
L-07

DL SEALED SERIES

Type 1

(6810-2653)

Material	PA6T
Color	Natural
hole size	φ 7.0
Plate thickness range for clamp クランプ適合板厚	t=0.6~1.6



Type 2

(6810-1584)

Material	PBT
Color	Brown
hole size	7.2×10.2
Plate thickness range for clamp クランプ適合板厚	t=0.7~2.0

