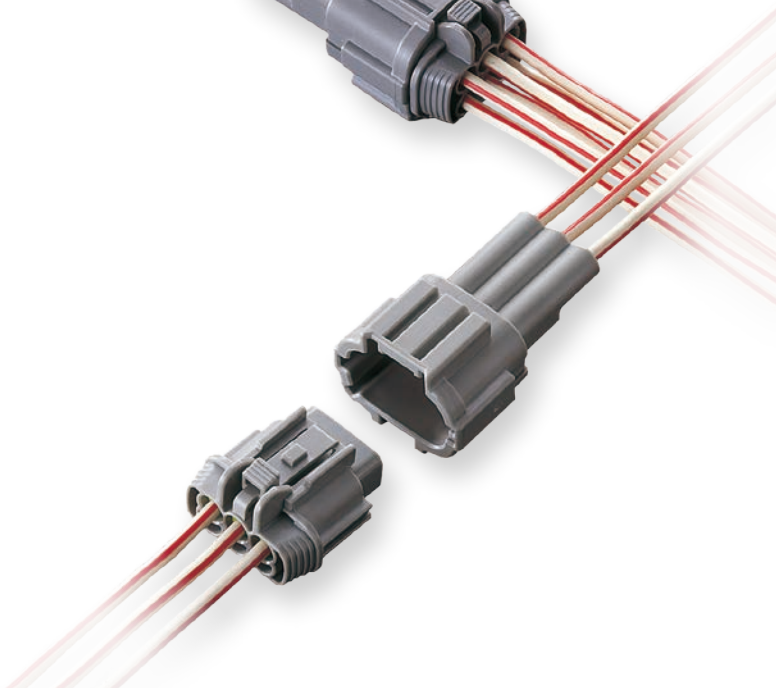
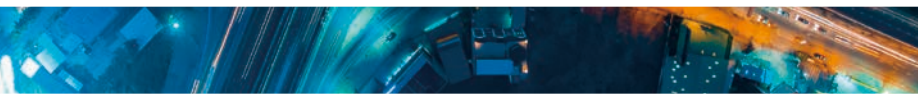


# RS SERIES



## Features

RS series consists of a 2.3mm type classified according to terminal size, supporting use in a variety of control circuits and low power circuits. The RS-standard type connectors adopt an inertia locking system to prevent semi-engagement (this system is not incorporated in some connectors).

## 特長

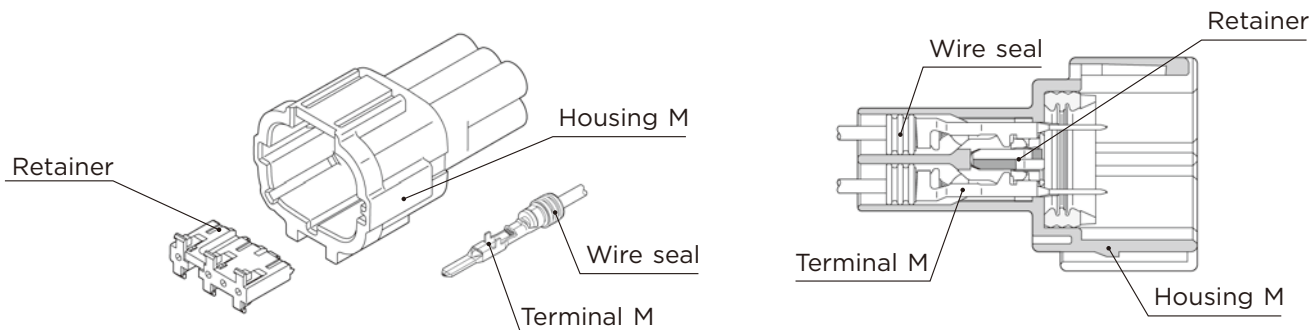
RSシリーズは、ターミナルサイズが2.3mmで構成されており、各種の制御回路並びに低パワー回路に対応することができます。

RS標準タイプコネクタは、コネクタの半嵌合が起きにくい慣性ロック方式です。(慣性ロック方式でないコネクタが一部あります。)

# RS SERIES for STANDARD Type1

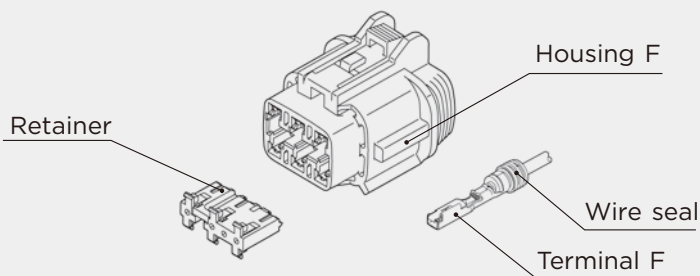
## 2.3mm (090)

### Structure

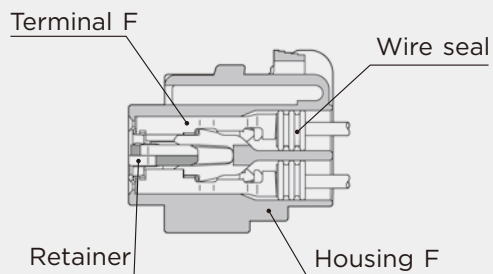


H-02

### Connector M



### Connector F



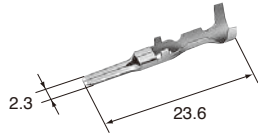
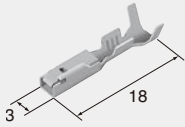
## 2.3mm (090)

(E)	(J)
Cable size	: 適用電線サイズ
Cable overall diameter	: 電線仕上り外径
Heat-resistant copper alloy	: 耐熱銅合金
Brass	: 黄銅
Surface treatment	: 表面処理
Gold-plated	: Auメッキ
Tin-plated	: Snメッキ

**Terminal** (UNIT : mm)

**(S)**

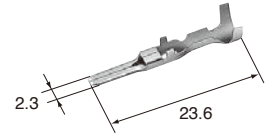
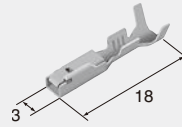
Cable size (mm <sup>2</sup> )	0.3~0.5
Material	Brass
Surface treatment	Tin-plated

**M (8100-3803)****F (8240-0263)**

Cable size (mm <sup>2</sup> )	0.3~0.5
Material	Heat-resistant copper alloy
Surface treatment	Tin-plated

**(S)****Au**

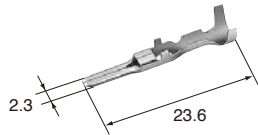
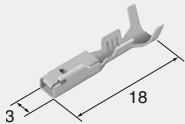
Cable size (mm <sup>2</sup> )	0.3~0.5
Material	Brass
Surface treatment	Gold-plated

**M (8100-3805)****F (8240-0266)**

Cable size (mm <sup>2</sup> )	0.3~0.5
Material	Heat-resistant copper alloy
Surface treatment	Gold-plated

**(M)**

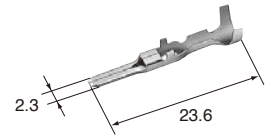
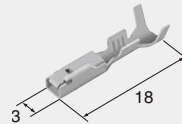
Cable size (mm <sup>2</sup> )	0.85~1.25
Material	Brass
Surface treatment	Tin-plated

**M (8100-3804)****F (8240-0264)**

Cable size (mm <sup>2</sup> )	0.85~1.25
Material	Heat-resistant copper alloy
Surface treatment	Tin-plated

**(M)****Au**

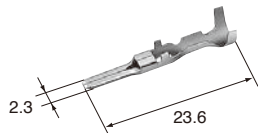
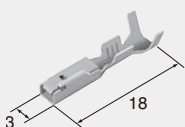
Cable size (mm <sup>2</sup> )	0.85~1.25
Material	Brass
Surface treatment	Gold-plated

**M (8100-3806)****F (8240-0267)**

Cable size (mm <sup>2</sup> )	0.85~1.25
Material	Heat-resistant copper alloy
Surface treatment	Gold-plated

**(L)**

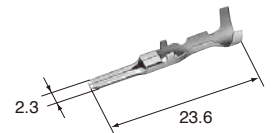
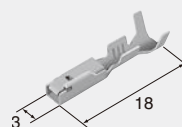
Cable size (mm <sup>2</sup> )	2.0
Material	Brass
Surface treatment	Tin-plated

**M (8100-4172)****F (8240-0265)**

Cable size (mm <sup>2</sup> )	2.0
Material	Heat-resistant copper alloy
Surface treatment	Tin-plated

**(L)****Au**

Cable size (mm <sup>2</sup> )	2.0
Material	Brass
Surface treatment	Gold-plated

**M (8100-4173)****F (8240-0268)**

Cable size (mm <sup>2</sup> )	2.0
Material	Heat-resistant copper alloy
Surface treatment	Gold-plated

**H-03**

RS SERIES

## 2.3mm (090)

### Wire seals (UNIT : mm)

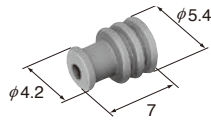
The wire seals are common to M and F.

ワイヤシールはM、F 共用です。

(M)

(7165-0472)

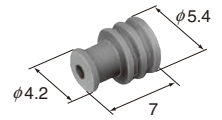
Cable size (mm <sup>2</sup> )	(AVSS/1.25)
Cable overall diameter (mm)	2.0~2.4
Material	Silicone
Color	Violet



(US)

(7165-0474)

Cable size (mm <sup>2</sup> )	(AVSS/0.3) (CAVUS/0.3~0.5)
Cable overall diameter (mm)	1.0~1.4
Material	Silicone
Color	Orange



(S)

(7165-0473)

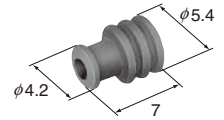
Cable size (mm <sup>2</sup> )	(AVSS/0.5~0.85) (CAVUS/0.85~1.25)
Cable overall diameter (mm)	1.5~1.9
Material	Silicone
Color	Light Blue



(L)

(7165-0471)

Cable size (mm <sup>2</sup> )	(AVSS/2.0)
Cable overall diameter (mm)	2.5~2.9
Material	Silicone
Color	Light Green



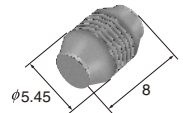
## 2.3mm (090)

### Dummy plugs (UNIT : mm)

- Dummy plugs are common to M and F.
- Dummy plugs are used to blind unused terminal holes.
- ダミー栓はM、F 共用です。
- 不必要なターミナル穴を塞ぐために、ダミー栓を使用します。

(7165-1131)

Material	Silicone
Color	Blue



## 2.3mm (090)

### Housing (UNIT : mm)

Ref: Terminal part No. H-02

Ref: wire seal No. H-04

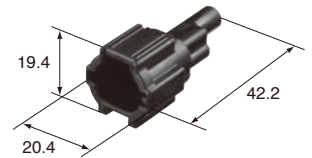
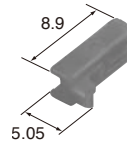
Ref: Dummy plug No. H-04

Material PBT

※ Detail dimensions for mounting portion of the bracket are specified in the official drawing. Please contact our sales staff.

※ 固定用ブラケットに関しては、弊社営業担当にお問い合わせください。

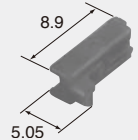
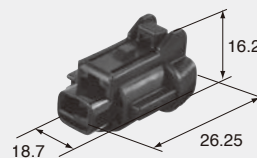
### 1way



Retainer No. (6918-1773)

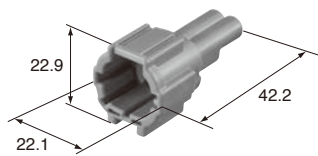
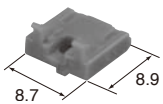
**M (6188-0551)** RS 01 MB

RS 01 FB **F (6185-0862)**



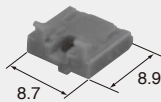
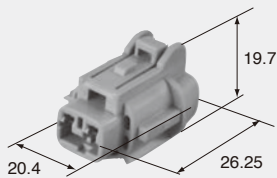
Retainer No. (6918-1773)

### 2way



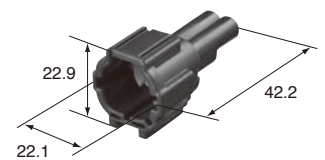
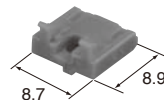
Retainer No. (6918-1774)

**M (6188-0554)** RS 02 MGY RS 02 FGY **F (6185-0867)**



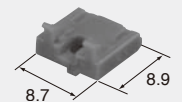
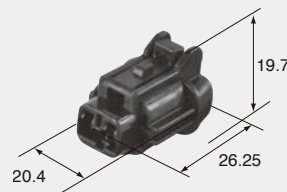
Retainer No. (6918-1774)

### 2way



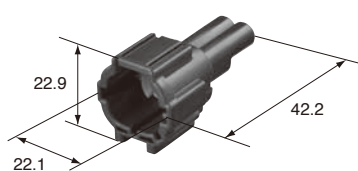
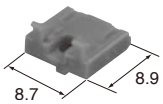
Retainer No. (6918-1774)

**M (6188-0552)** RS 02 MB RS 02 FB **F (6185-0865)**



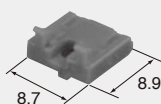
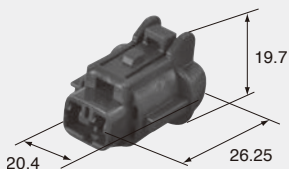
Retainer No. (6918-1774)

### 2way



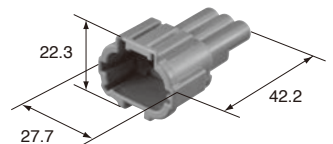
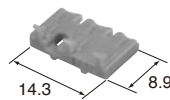
Retainer No. (6918-1774)

**M (6188-0553)** RS 02 MBR  
**M (6188-0663)** RS 02 MBR-DGY RS 02 FBR **F (6185-0866)**  
 RS 02 FBR-DGY **F (6185-1101)**



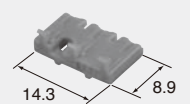
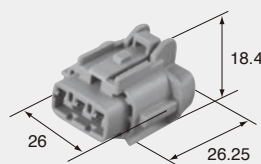
Retainer No. (6918-1774)

### 3way



Retainer No. (6918-1775)

**M (6188-0556)** RS 03 MGY RS 03 FGY **F (6185-0869)**

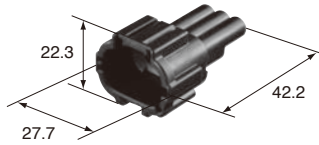


Retainer No. (6918-1775)

H-05

RS SERIES

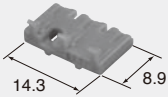
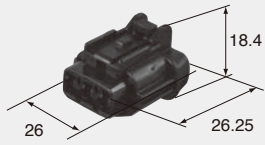
### 3way



Retainer No. (6918-1775)

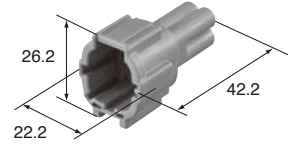
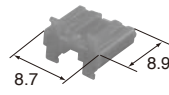
**M (6188-0555)** RS 03 MB

RS 03 FB **F (6185-0868)**



Retainer No. (6918-1775)

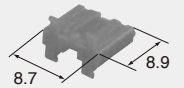
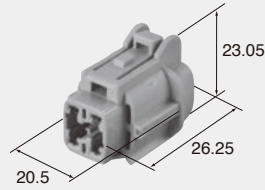
### 4way



Retainer No. (6918-1776)

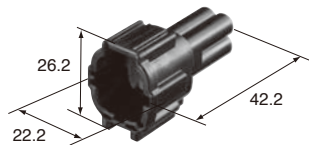
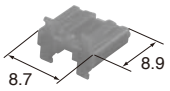
**M (6188-0558)** RS 04 MGY

RS 04 FGY-PR **F (6185-1171)**



Retainer No. (6918-1776)

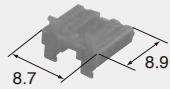
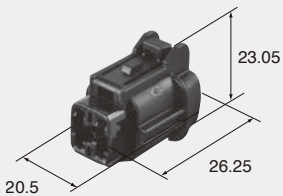
### 4way



Retainer No. (6918-1776)

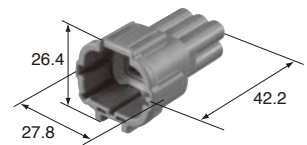
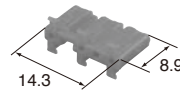
**M (6188-0557)** RS 04 MB

RS 04 FB-PR **F (6185-1169)**



Retainer No. (6918-1776)

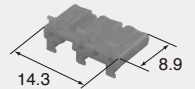
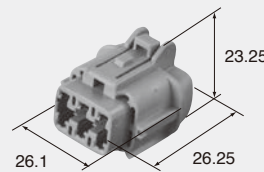
### 6way



Retainer No. (6918-1779)

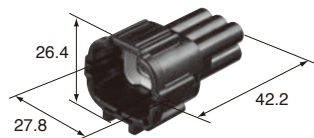
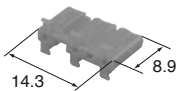
**M (6188-5540)** RS 06 MGY

RS 06 FGY-PR **F (6185-5177)**



Retainer No. (6918-1779)

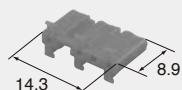
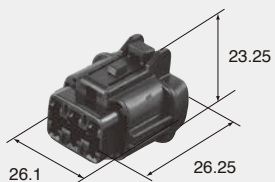
### 6way



Retainer No. (6918-1779)

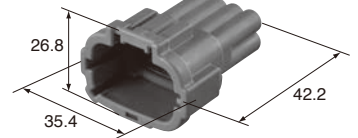
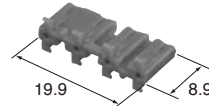
**M (6188-5539)** RS 06 MB

RS 06 FB-PR **F (6185-5175)**



Retainer No. (6918-1779)

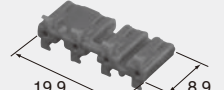
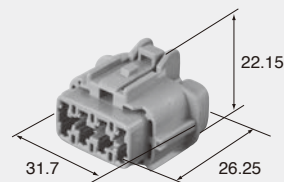
### 8way



Retainer No. (6918-1780)

**M (6188-5544)** RS 08 MGY-PR

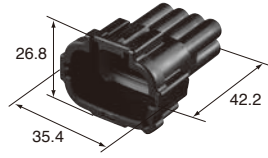
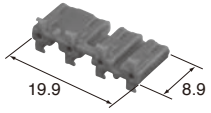
RS 08 FGY-PR **F (6185-5181)**



Retainer No. (6918-1780)

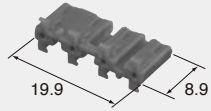
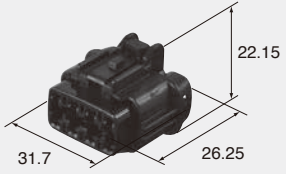
H-06

8way



Retainer No. (6918-1780)

**M (6188-5542)** RS 08 MB-PR    RS 08 FB-PR    **F (6185-5179)**

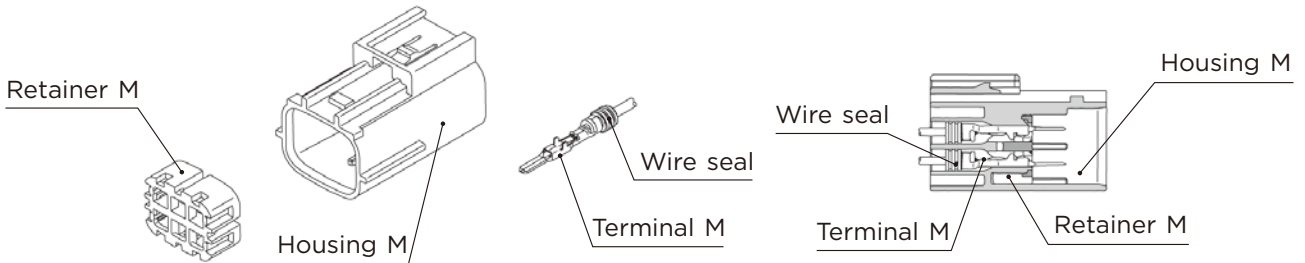


Retainer No. (6918-1780)

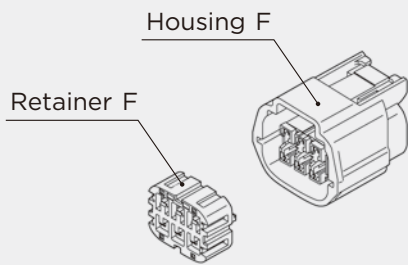
# RS SERIES for STANDARD Type2

## 2.3mm (090)

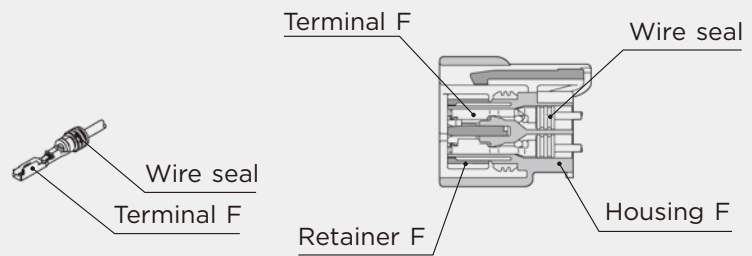
### Structure



### Connector M

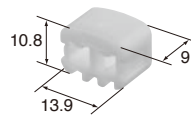


### Connector F

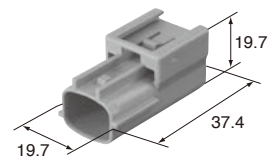


## 2.3mm (090)

### 2way



Retainer No. (6918-1653)



**M (6181-0515)** RS 02 MSB

**M (6181-0670)** RS 02 MSB-B

RS 02 FSB **F (6189-0951)**

RS 02 FSB-B **F (6189-1107)**

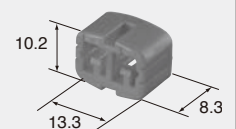
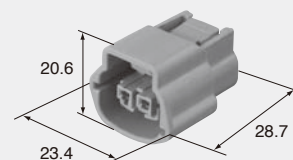
### Housing (UNIT : mm)

Ref: Terminal part No. H-02

Ref: wire seal No. H-04

Ref: Dummy plug No. H-04

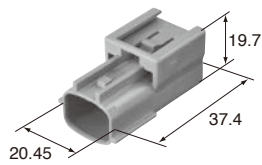
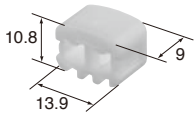
Material PBT



Retainer No. (6918-1651)

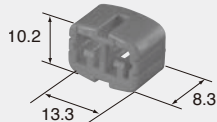
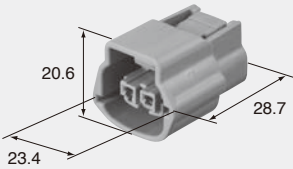


### 2way



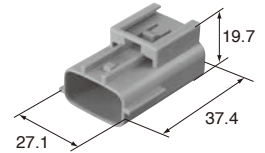
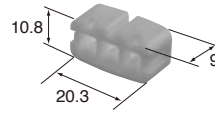
Retainer No. (6918-1653)

**M (6181-0532)** RS 02 MLGY RS 02 FLGY **F (6189-0950)**



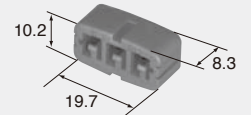
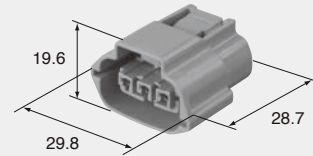
Retainer No. (6918-1651)

### 3way



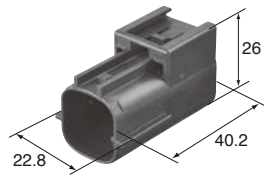
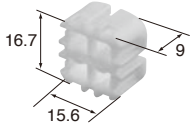
Retainer No. (6918-1654)

**M (6181-0516)** RS 03 MSB  
**M (6181-0671)** RS 03 MSB-GY RS 03 FSB **F (6189-0928)**  
RS 03 FSB-GY **F (6189-1104)**



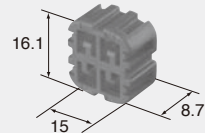
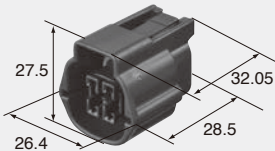
Retainer No. (6918-1652)

### 4way



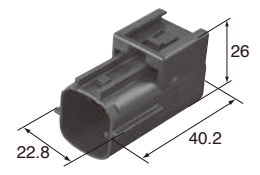
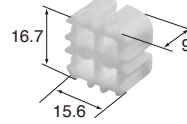
Retainer No. (6918-1598)

**M (6181-0513)** RS 04 MG  
**M (6181-0668)** RS 04 MG-GY RS 04 FG **F (6189-7756)**  
RS 04 FG-GY **F (6189-7757)**



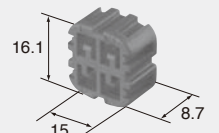
Retainer No. (6918-1599)

### 4way



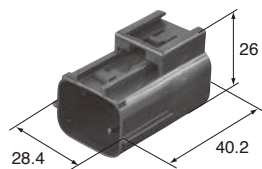
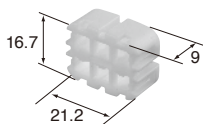
Retainer No. (6918-1598)

**M (6181-0514)** RS 04 ML  
**M (6181-0669)** RS 04 ML-B RS 04 FL **F (6189-7758)**  
RS 04 FL-B **F (6189-7759)**



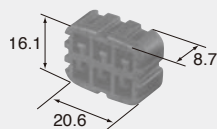
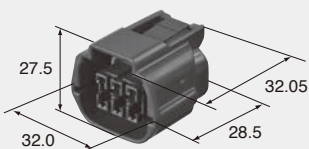
Retainer No. (6918-1599)

### 6way



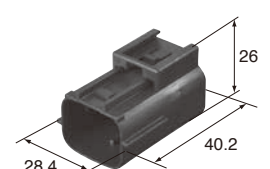
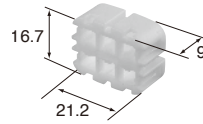
Retainer No. (6918-1600)

**M (6181-0511)** RS 06 MG  
**M (6181-0665)** RS 06 MG-DGY RS 06 FG **F (6189-7760)**  
RS 06 FG-DGY **F (6189-7761)**



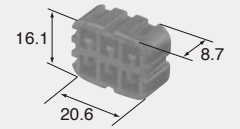
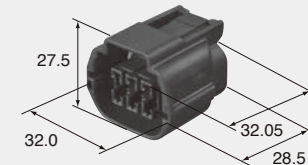
Retainer No. (6918-1601)

### 6way



Retainer No. (6918-1600)

**M (6181-0536)** RS 06 ML  
**M (6181-0664)** RS 06 ML-B RS 06 FL **F (6189-7762)**  
RS 06 FL-B **F (6189-7763)**

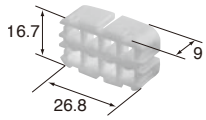


Retainer No. (6918-1601)

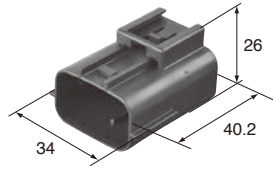
H-09

RS SERIES

8way



Retainer No. (6918-1602)



**M (6181-0512)** RS 08 MG

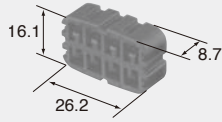
**M (6181-0667)** RS 08 MG-GY

RS 08 FG

**F (6189-0954)**

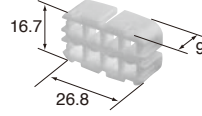
RS 08 FG-GY

**F (6189-1108)**

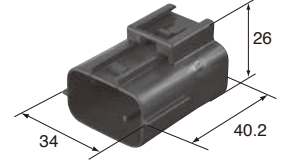


Retainer No. (6918-1603)

8way



Retainer No. (6918-1602)



**M (6181-0522)** RS 08 ML

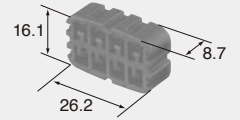
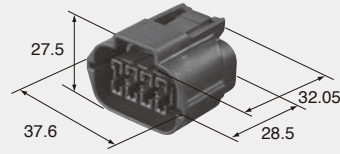
**M (6181-0666)** RS 08 ML-B

RS 08 FL

**F (6189-0955)**

RS 08 FL-B

**F (6189-1109)**

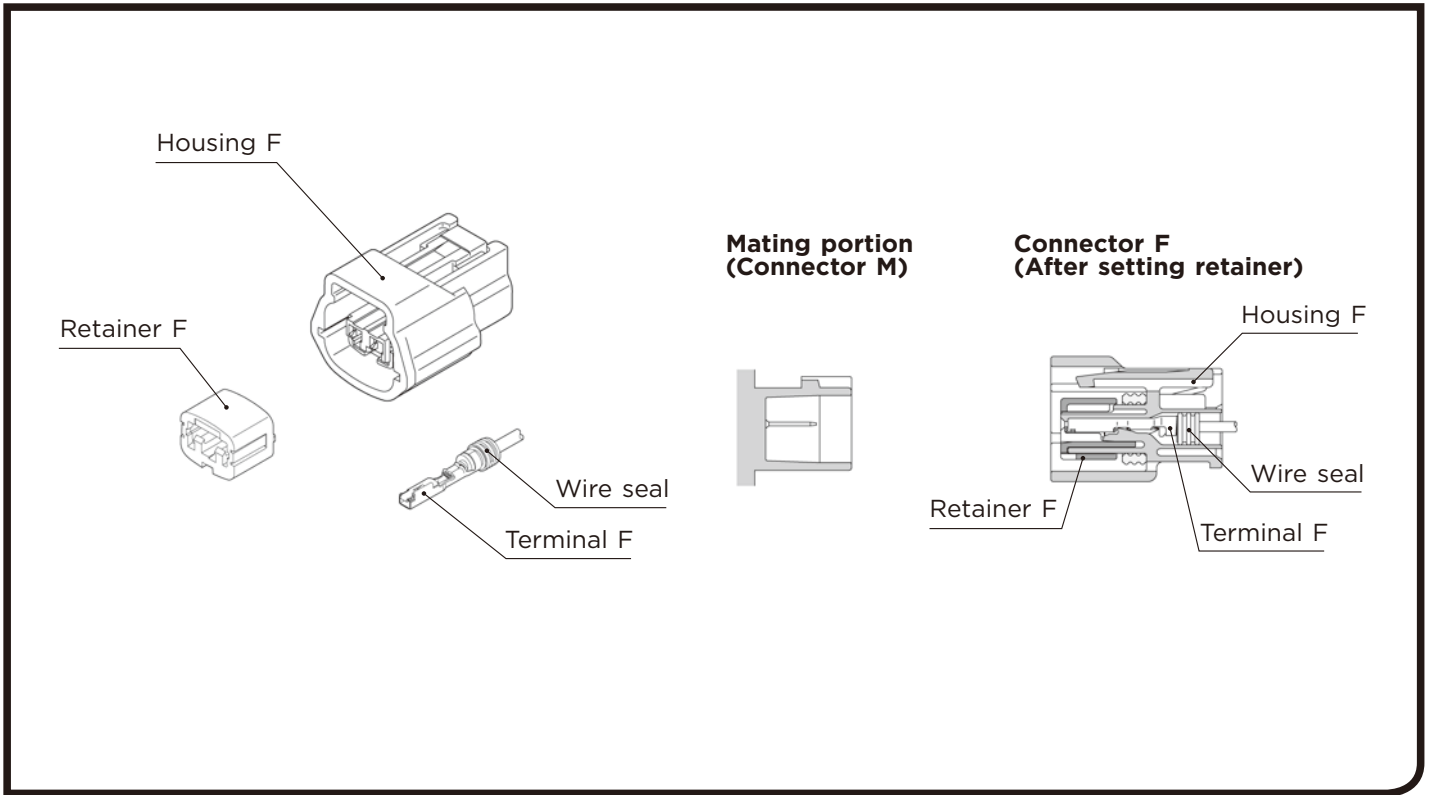


Retainer No. (6918-1603)

# RS SERIES for E-RS

2.3mm (090)

## Structure



H-11

RS SERIES

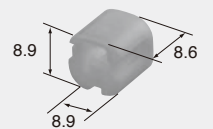
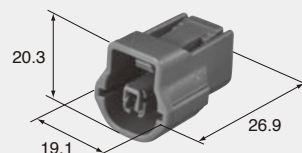
2.3mm (090)

## Housing (UNIT : mm)

Ref: Terminal part No.	H-02
Ref: wire seal No.	H-04
Ref: Dummy plug No.	H-04
Material	PBT

### 1way

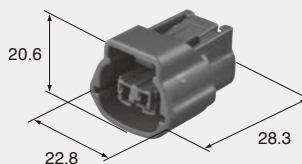
E 01 FGY-RS **F (6098-2329)**



Retainer No. (6918-1636)

### 2way

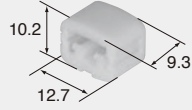
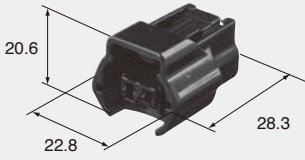
E 02 FGY-RS **F (6189-0772)**



Retainer No. (6918-1594)

2way

E 02 FB-RS **F (6189-0773)**

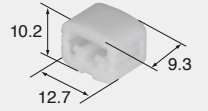
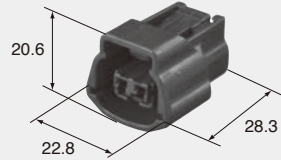


Retainer No. (6918-1594)

2way

E 02 FBR-RS **F (6189-0774)**

E 02 FBR-RS-GY **F (6189-1093)**

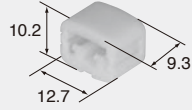
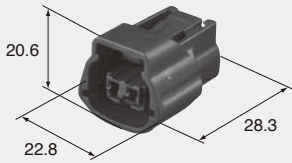


Retainer No. (6918-1594)

2way

E 02 FG-RS **F (6189-0775)**

E 02 FG-RS-LGY **F (6189-1094)**

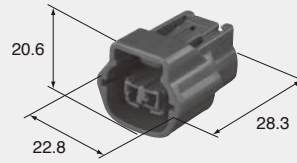


Retainer No. (6918-1594)

2way

E 02 FR-RS **F (6189-0776)**

E 02 FR-RS-GY **F (6189-1095)**

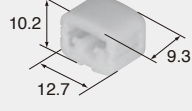
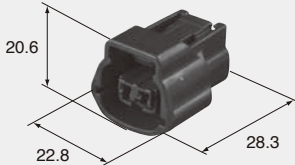


Retainer No. (6918-1594)

2way

E 02 FL-RS **F (6189-0777)**

E 02 FL-RS-LGY **F (6189-1096)**

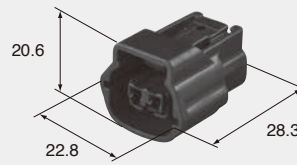


Retainer No. (6918-1594)

2way

E 02 FPU-RS **F (6189-0778)**

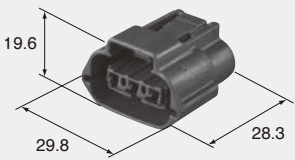
E 02 FPU-RS-B **F (6189-1097)**



Retainer No. (6918-1594)

3way

E 03 FGY-RS **F (6189-7471)**

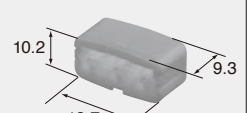
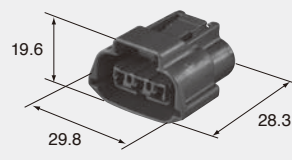


Retainer No. (6918-1595)

3way

E 03 FBR-RS **F (6189-7710)**

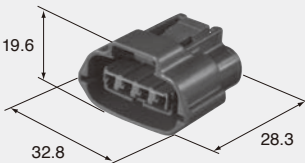
E 03 FBR-RS-B **F (6189-7711)**



Retainer No. (6918-1595)

4way

E 04 FGY-RS **F (6189-7469)**

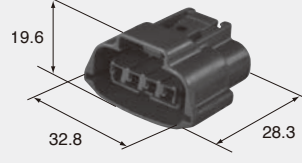


Retainer No. (6918-1596)

4way

E 04 FBR-RS **F (6189-7713)**

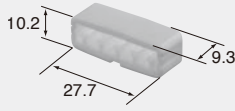
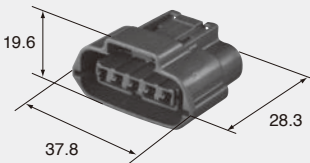
E 04 FBR-RS-LGY **F (6189-7714)**



Retainer No. (6918-1596)

5way

E 05 FGY-RS **F (6189-7470)**

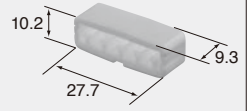
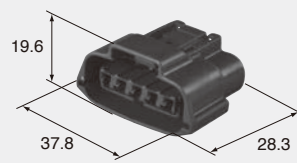


Retainer No. (6918-1604)

5way

E 05 FBR-RS **F (6189-7716)**

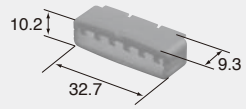
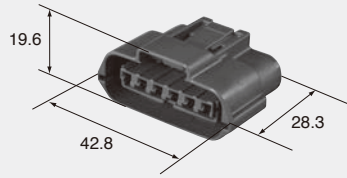
E 05 FBR-RS-B **F (6189-7717)**



Retainer No. (6918-1604)

6way

E 06 FGY-RS **F (6189-7393)**



Retainer No. (6918-1597)